

FAST, ACCURATE AND SIMPLE TO USE.

STJ has made it easier than ever to scan, order and deliver orthotics to your patients with it's digital scanning system. It's fast, accurate and easy to use.

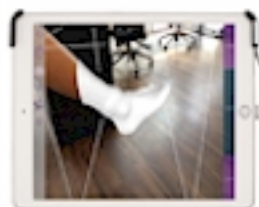
Introducing the STJ Digital Scanner Program.

For those who still take traditional casts- Save time and money:

- No more messy casts to take and clean up.
- Train ANYONE in your office to scan your patients.
- Eliminate cast preparation and shipping.
- Significant cost savings for cast materials & labor.
 - Placing an order is simple, reliable and direct.

Fast Startup

- NO BINDING CONTRACTS
 - Setup and training is a breeze - our system is truly a "plug-n-play."
 - No extensive assembly or office remodeling required.
- Easy mobility from room to room
- Expert technical support to guide you through the setup process.



Easy Ordering & Transmission

Easy Ordering & Transmission

Benefits for the practitioner, even those who need to replace their current scanner/orthotic system:

- The 'EZ Click & Go' order form makes the entire process instant and complete.
 - Scan can be Non-weight bearing, neutral position or Semi-weight bearing - your choice.
- Maintain your preferred patient position - prone or supine.
- Affordable, accurate and easy to use.
- Enhance your orthotic presentation to your patients & increase sales.

Reliable Orthotic Delivery

The STJ Digital Scanner Program streamlines your patient casting-to-orthotic process.

- A complete scanning system supported by STJ's 20 years of comprehensive custom orthotic services.



Give us a call at 1-800-321-4STJ [ST] East] or 1-800-642-4STJ [ST] West] to see how we can save you time and money and incorporate the benefits of today's technology into your practice.

Reliable Orthotic Delivery



FOOTWORK
FOR
PERFORMANCE